

EC-JET ECL6100 Series Fiber Laser



EC-JET

Laser Printers

If your coding and marking requirement includes printing directly on metal surfaces then the ECL6100 series of Fiber Lasers is an excellent choice. Unlike CO2 lasers, which excel when printing on organic packaging materials such as paper, cardboard, wood, etc., Fibre lasers produce excellent results when printing on uncoated metals, as well as certain plastics.



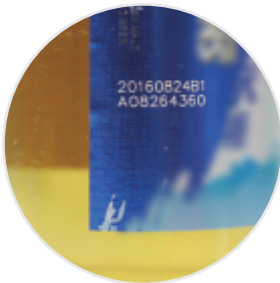
Liquid carton



Pipes



Cables



Beverages



Metal



More...



Stable

Optional IP55 rating ensures that the coder can work stably in harsh environment.



Reliable

No hard disk or UPS needed.
Independent operating system provides system stability and no need for separate PC.
User data will not be lost in the event of unplanned power disruption.



High speed

Excellent marking speed and quality.
High quality and permanent coding under high line speed.



Safe

Multi-level password protection.



Environment friendly

No consumable inks or solvents required.

EC-JET ECL6100 Series



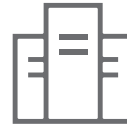
- Ease of use
- Compact structure



- Large size color touchscreen
- Simple graphical user interface
- Fast, convenient and intuitive message editing and marking setting



- Modular design
- Easy to install
- Flexible mounting stander, can be adjusted and moved to adapt to your production line
- Easy operation, make it fast and accurate to set the laser focal distance



- Built-in internet server, can achieve the remote control and network communication

Technical Specifications

SPECIFICATION	ECL6120	ECL6130	ECL6150
Laser Type	Fiber laser		
Laser Wave Length	1064 nm		
Laser Power	20W	30W	50W
Marking speed* (characters/sec)	up to 2000 characters/sec		
Linear speed*	Depends on the marking field and characters, up to 600 m/min		
Marking lines	Unlimited		
Character Height	0.3 mm – within marking area		
Fonts	Over 26 types of fonts, support customer design and multi-language		
Barcode Type	1D barcode, 2D barcode		
Graphic Format	BMP/DXF/HPGL/JPEG		
Text Type	Point, Line, Arc, Rectangle, Polygon, Ellipse, Circle		
Variate	Serial number, Text, Date, Time, Counter, Shift code		
Marking Area	70*70 mm, 110*110 mm, 160*160 mm, 174*174 mm, 205*205 mm, 300*300 mm, 360*360 mm, 400*400 mm		
User Interface	10.1 inch touch screen, QWERTY or AZERTY virtual keyboard, Shortcut icon-guided operation, Help-online, Multi-language support, Support Ethernet remote PC operation and networking		
Laser Head Dimension	441 mm*97 mm*108 mm		
Control Cabinet Size	510 mm*460 mm*150 mm		
Touchscreen Size	272 mm*21 mm*218 mm		
Product detect input	NPN/PNP/24V-detector; Shaft encoder or Synchronized signal		
Singal Input/Output	Start up/Stop/Interlock; System ready/Marking/Failure		
Interfaces	RS-232, Ethernet (10/100 Mbit)		
Power Supply	100-240 VAC, 50/60 Hz		
Cooling System	Air cooled		
Operating Temperature & Humidity	5–40 °C		
Protective Grade	IP55		
Optional	Network and remote control software (TCP/IP), Mounting stander Kit, Mounting stander Kit, Fume extractor		

*Marking speed and linear speed are substrate and code dependent



For more information, contact
Tigerpak Industrial Supplies,
6810 Kitimat Rd, Unit 1,
Mississauga, Ontario, L5N 5M2, Canada.

Telephone:
Ontario (289) 328-0651, (877) 538-8078
Quebec (514) 587-2607, (855) 296-4372

E-mail: Sales@Tigerpak.ca Info@Tigerpak.ca
Website: www.tigerpak.ca

